



**Pacific  
Northwest**  
NATIONAL LABORATORY

# TRIDEC Economic Impact Forum

DATE:  
April 1, 2019

PRESENTER:

**BATTELLE**

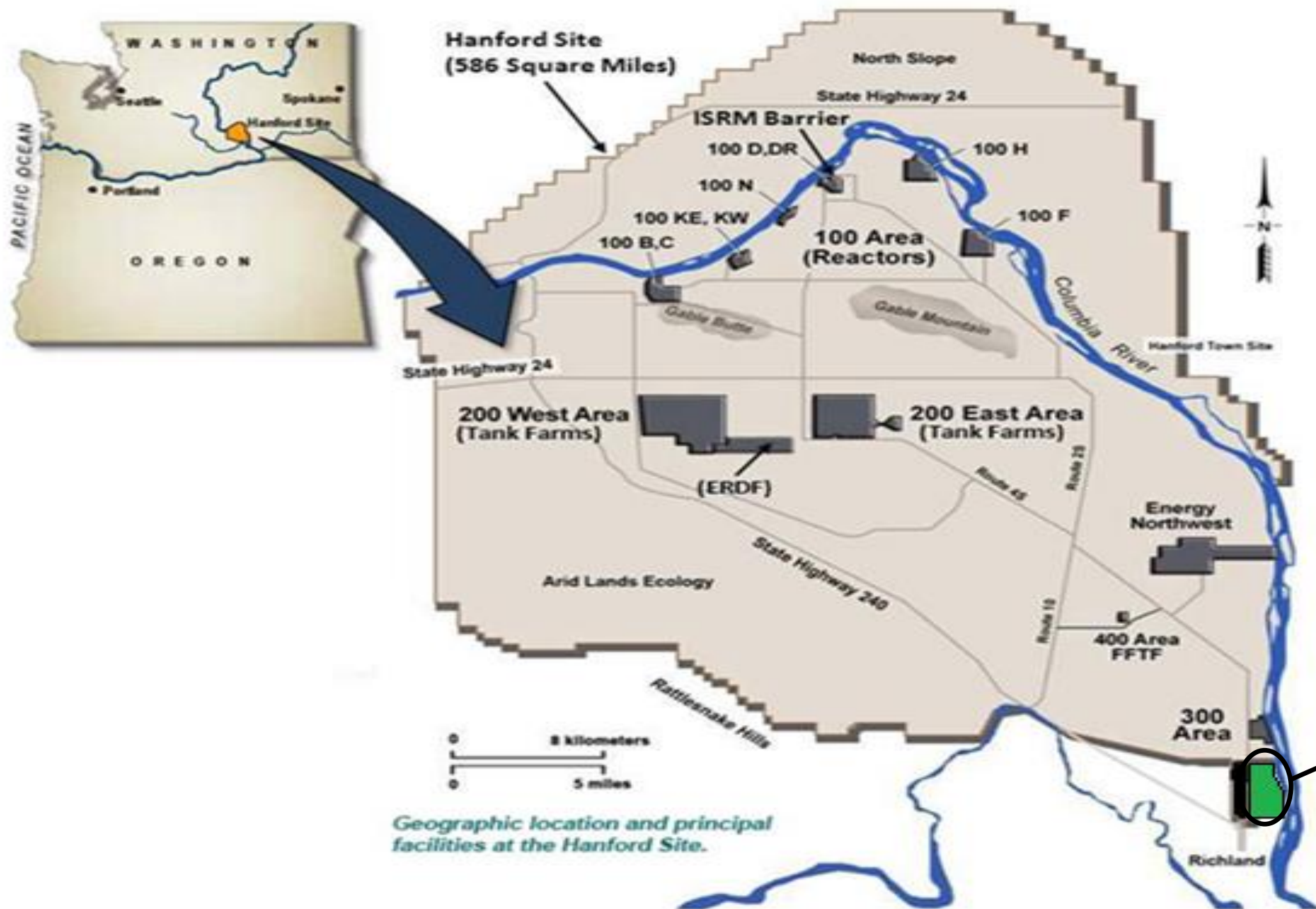
U.S. DEPARTMENT OF  
**ENERGY**

PNNL is operated by Battelle for the U.S. Department of Energy

PNNL-SA-XXXXX



# Three Offices Three Missions



- Hanford Site
- HAMMER



- Waste Treatment Plant
- Tank Waste



OFFICE OF  
**RIVER PROTECTION**  
United States Department of Energy

- PNNL



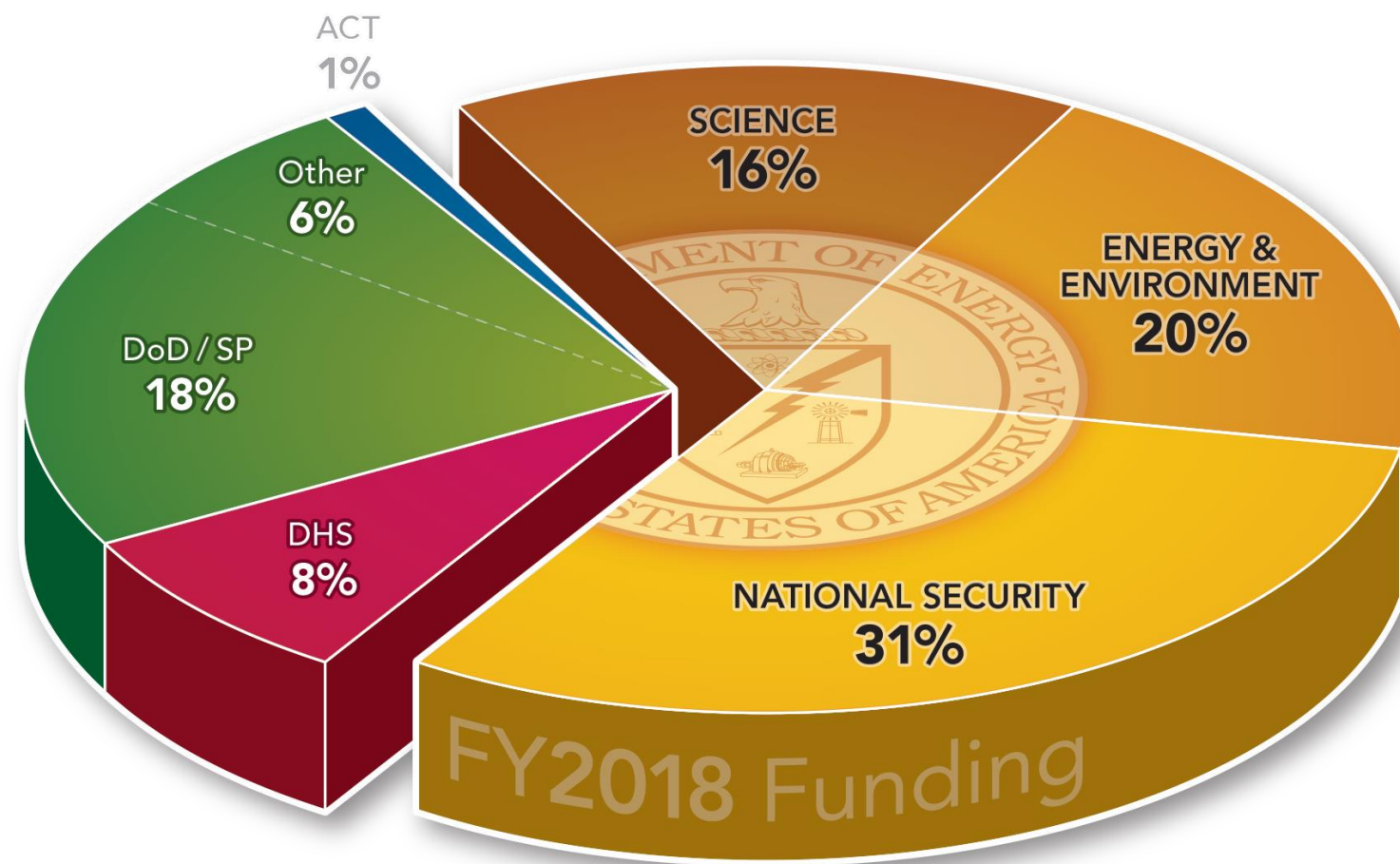
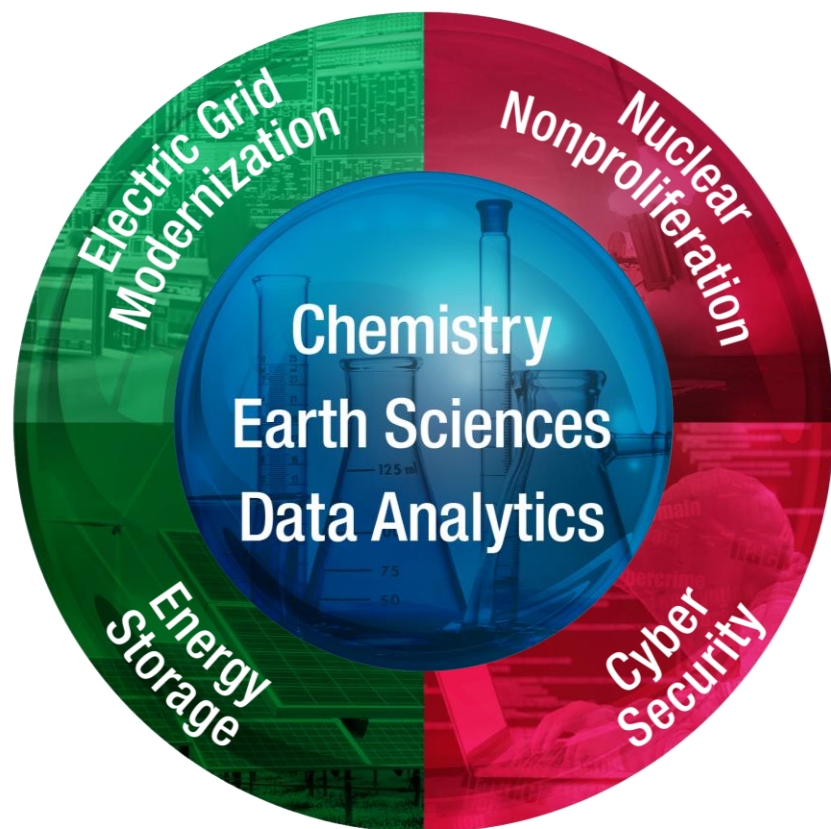
U.S. DEPARTMENT OF  
**ENERGY**

Pacific Northwest  
Site Office



PNNL is a **diverse, multi-program** national laboratory

(FY18 data)



**~4,400**  
Staff



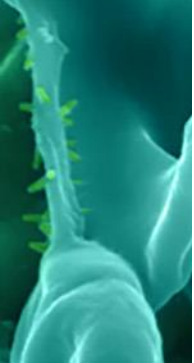
**1,124**  
Peer-reviewed  
Publications



**99**  
U.S. & Foreign  
Patents



**\$960M**  
Budget



We **transition our technology** to industry



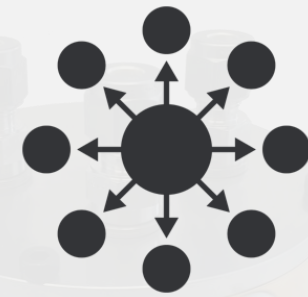
**5**

R&D100 and FLC  
Awards in 2018



**99**

U.S. and International  
Patents in 2018



**43**

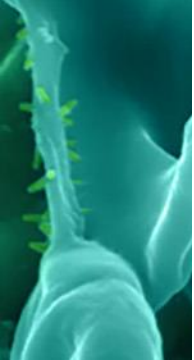
Licenses and Options  
in 2017

Average  
**ONE**  
INVENTION  
per 2 days

Average  
**ONE**  
PATENT  
per week

**187**  
BUSINESSES  
with PNNL  
roots





We Help **Stimulate The Local Economy**

**10,673**

PNNL Flights Out of PSC

**5,234**

Out of Town Visitors

**\$4.6M**

Estimated Tourism Expenditures

**30,500**

Estimated Total Visitor Days

**\$350M**

Domestic purchased goods and services (\$82.5M in WA)

**+150**

Positions to be filled to reach FY19 Target

**\$820K**

STEM & Philanthropic contributions



We have launched **five new joint institutes** in the past year

**W**  
UNIVERSITY of  
WASHINGTON

### NW-IMPACT

*Northwest Institute for Materials Physics,  
Chemistry, and Technology*

OREGON  
HEALTH  
& SCIENCE  
UNIVERSITY

### PMedIC

*Precision Medicine Innovation  
Co-Laboratory*

WASHINGTON STATE  
UNIVERSITY

**Nuclear Science & Technology**

**Bioproducts**

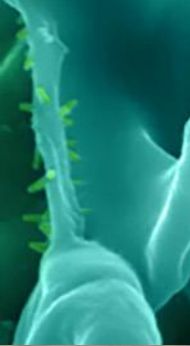
**Advanced Power Grid**

JGCRI

Advanced  
Power Grid







# Creating a modern, collaborative campus

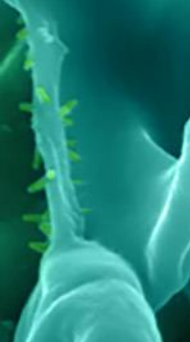




PNNL has **distinctive people, equipment, & facilities** that enable leading edge S&T







## Investing in Richland, 2014-2019



General Purpose Chemistry Laboratory



Engineering & Analysis Building

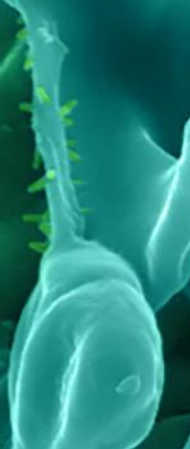


Systems Engineering Building



Discovery Hall





## Making Way for the Future



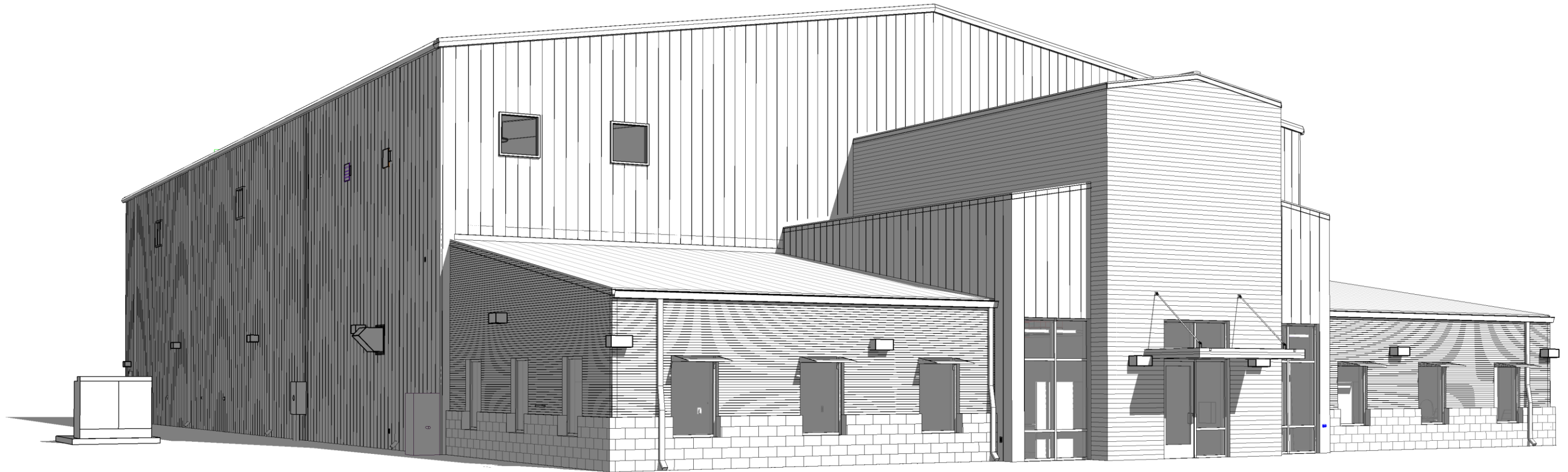
RTL Demo



ESB Demo



## G-1 Replacement Project and Port of Pasco Hanger Construction – Hanger Complete Late Summer 2019





# Advancing the Energy Sciences Capability project

