



**Pacific
Northwest**
NATIONAL LABORATORY

Pacific Northwest National Laboratory 2022 Update

February 18, 2022

Steven Ashby
Laboratory Director

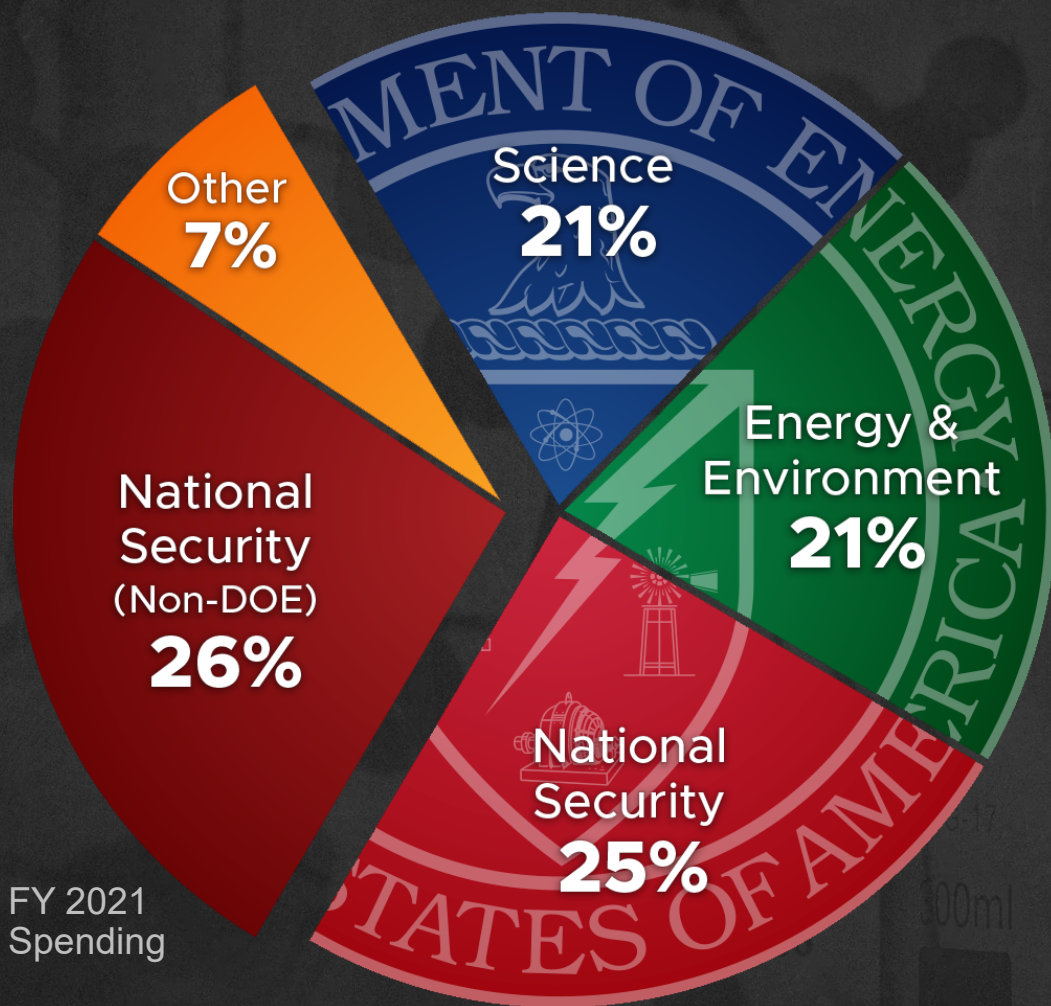
U.S. DEPARTMENT OF
ENERGY **BATTELLE**

PNNL is operated by Battelle for the U.S. Department of Energy

PNNL-EX-10282



PNNL is one of DOE's most diverse national laboratories



\$1.24B Spending



5,300 Staff

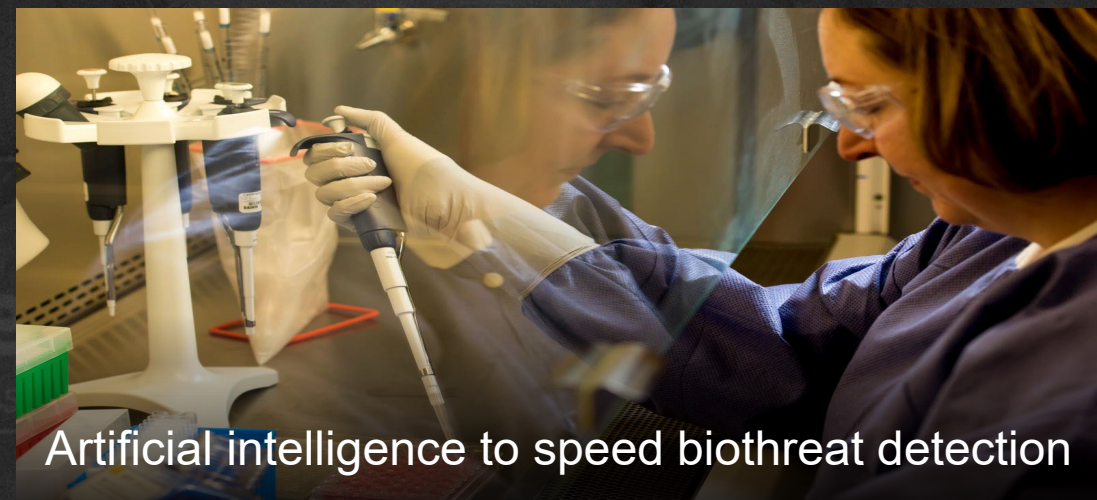


1,755 Peer-reviewed
Publications



247 Invention
Disclosures

Anticipating emerging national needs



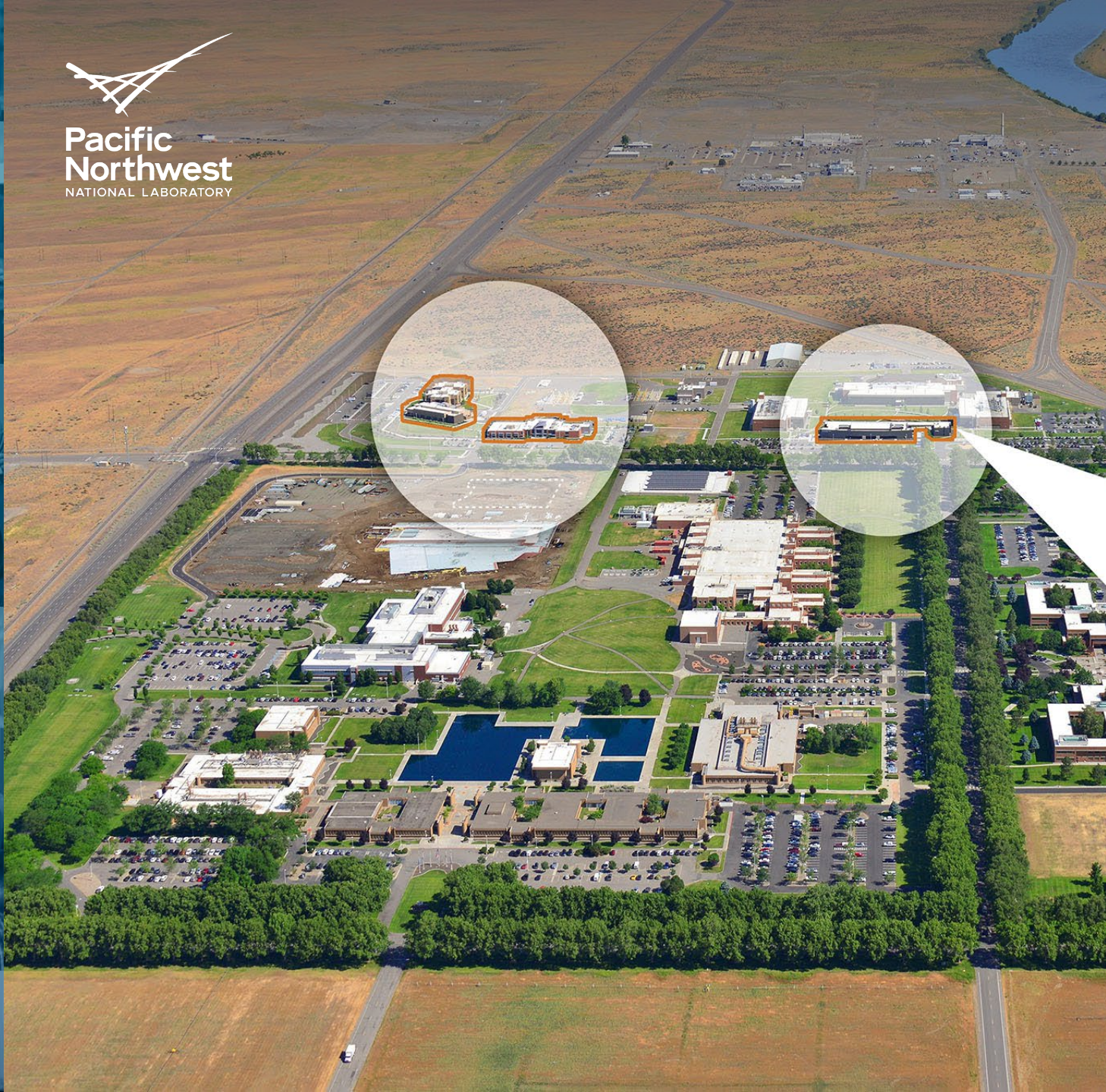
Partnering for success





Investing \$1 billion over 10 years to modernize PNNL facilities and infrastructure





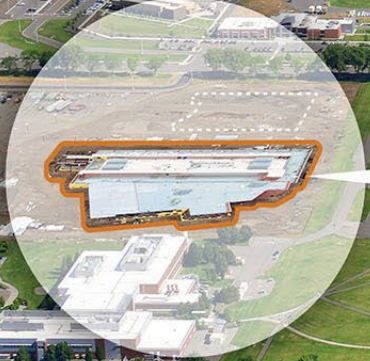
IGPP

Institutional Investments

- Systems Engineering Building
- Discovery Hall
- General Purpose Chemistry Laboratory
- Engineering and Analysis Building



Pacific
Northwest
NATIONAL LABORATORY



ESC

Energy Sciences Center

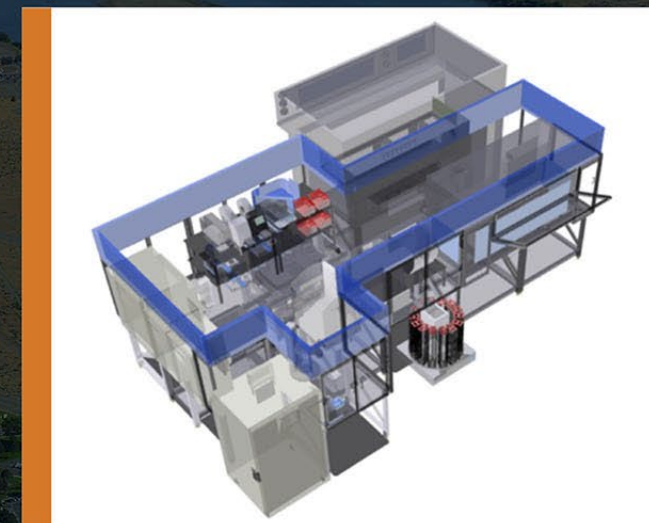
\$90 MILLION
LINE ITEM



GSL

Grid Storage Launchpad

\$77 MILLION
LINE ITEM



M2P_c

Microbial Molecular Phenotyping Capability

EMSL IDENTIFIED
AS PREFERRED
SC USER FACILITY



RPL

Radiochemical
Processing
Laboratory

\$150 MILLION
NNSA-SC MOA



National Security Research Complex

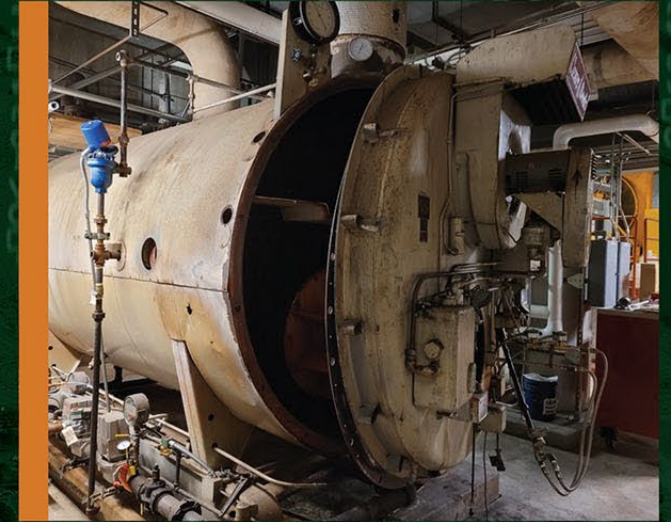
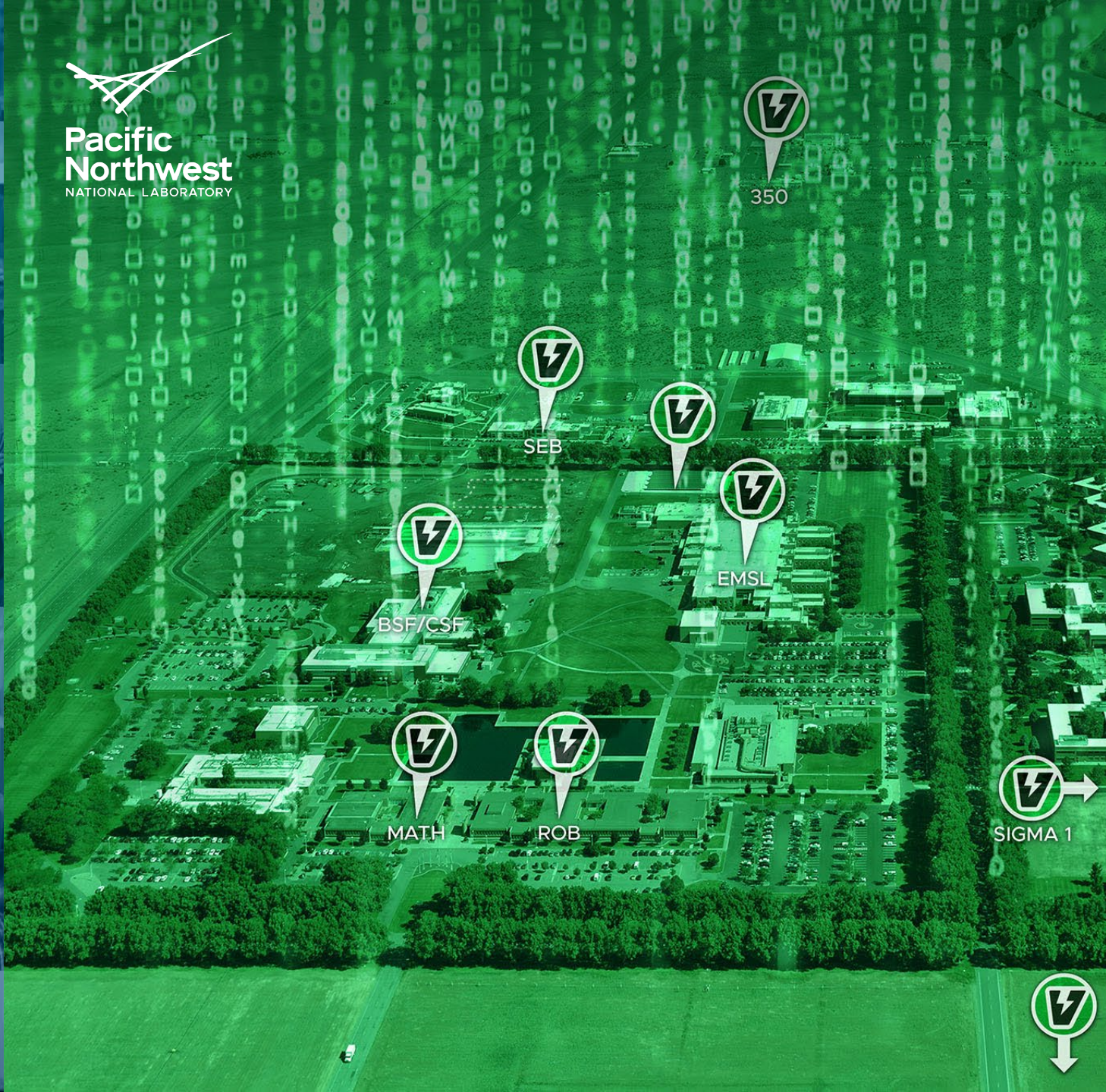
IN PLANNING



Sequim

Marine & Coastal Research Laboratory

IN PLANNING



NZERO

NetZero emissions
with energy-resilient
operations

\$309M REQUEST



**Thank you to
TRIDEC and our
community for your
partnership.**

**We are proud to be
your neighbor!**



February 18, 2022