

TRIDEC 22nd Annual Tri-Cities Economic Outlook

March 9, 2021



WHY CBC?



11,187
STUDENTS

16.5
AVERAGE
CLASS SIZE

\$206
AVERAGE COST/CREDIT

43%
HISPANIC
ENROLLMENT

42%
FIRST GENERATION
STUDENTS

FOUNDED IN
1955

126
RESIDENCE
HALL CAPACITY

 **46%**
MALE

1 OF 6
HISPANIC SERVING
INSTITUTIONS

100+ DEGREE &
CERTIFICATE
PROGRAMS

8
BACHELOR
PROGRAMS

53
CERTIFICATE
CHOICES

9

ATHLETIC TEAMS



WA 2030 Goal - Postsecondary



WE NEED TO MORE THAN
DOUBLE THE POSTSECONDARY
ATTAINMENT RATE
FOR WASHINGTON KIDS

TODAY'S REALITY

31%

of Washington High School
Students Go on to Earn a
Postsecondary Credential

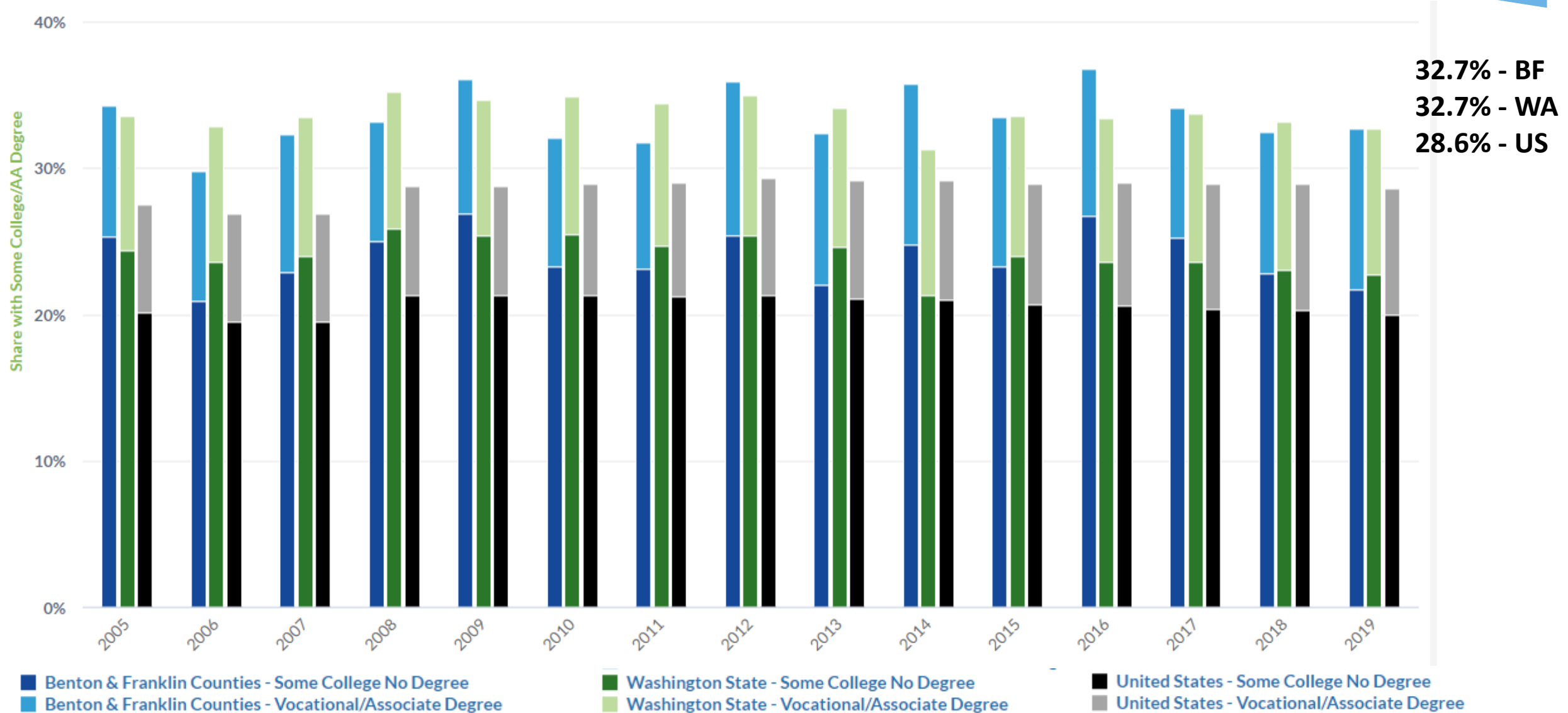


OUR GOAL: BY 2030

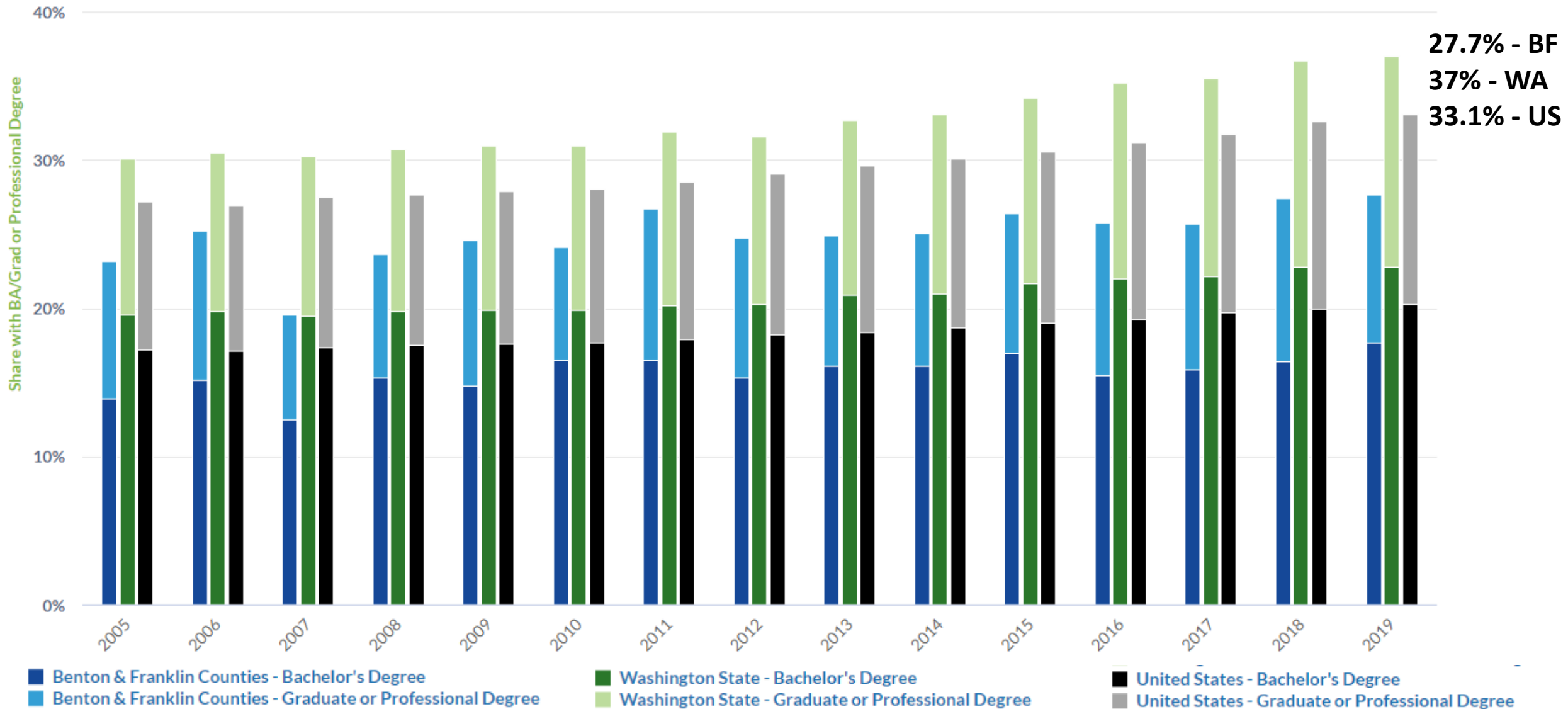
70%

of Washington Students
Earn a Postsecondary
Credential By Age 26

Ages 25+ with some college or Associate's Degree



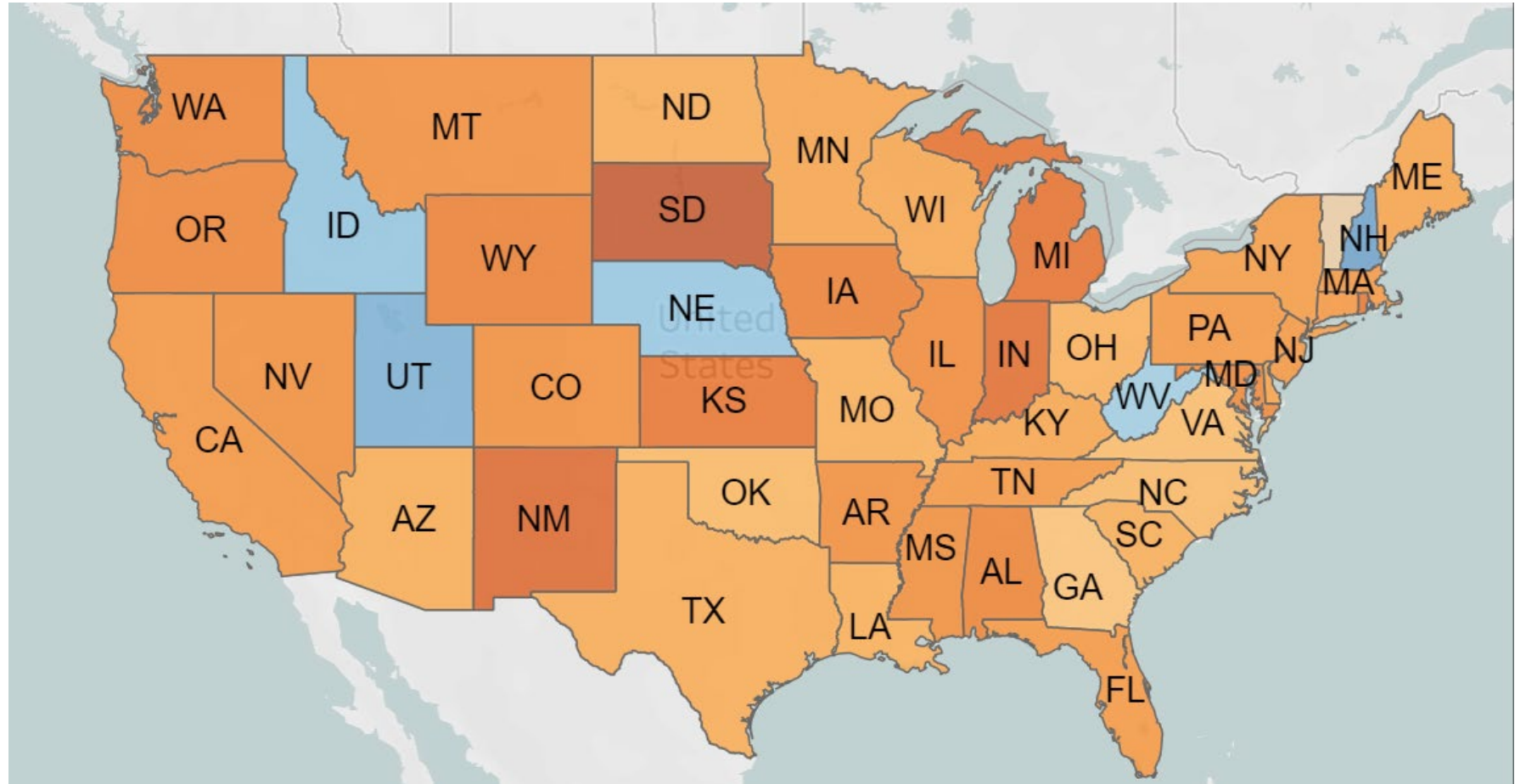
Ages 25+ with at least Bachelor's Degree



U.S. Undergrad Enrollment – Fall 2020

Overall: -4.4%

Community
Colleges: -10%



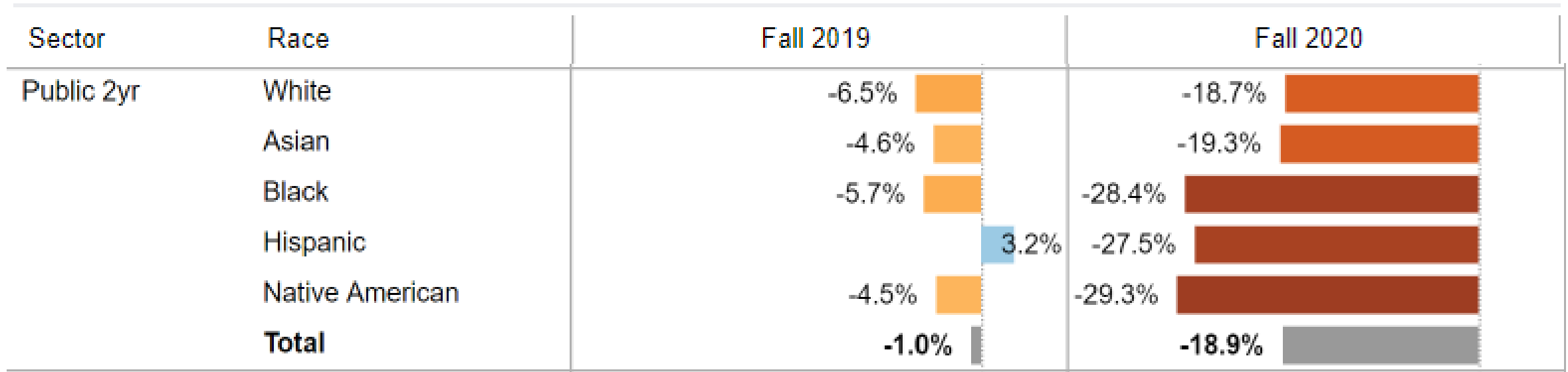
Percent Change

-20.0%



15.0%

U.S. Freshman Enrollment Changes



Freshman Decline

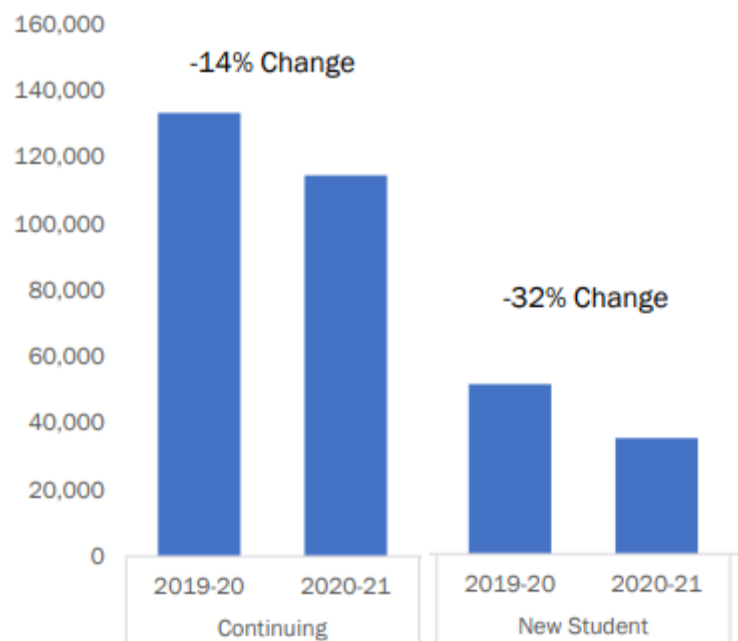
All undergraduates: 13%

Community Colleges: 19%

Washington CTC System

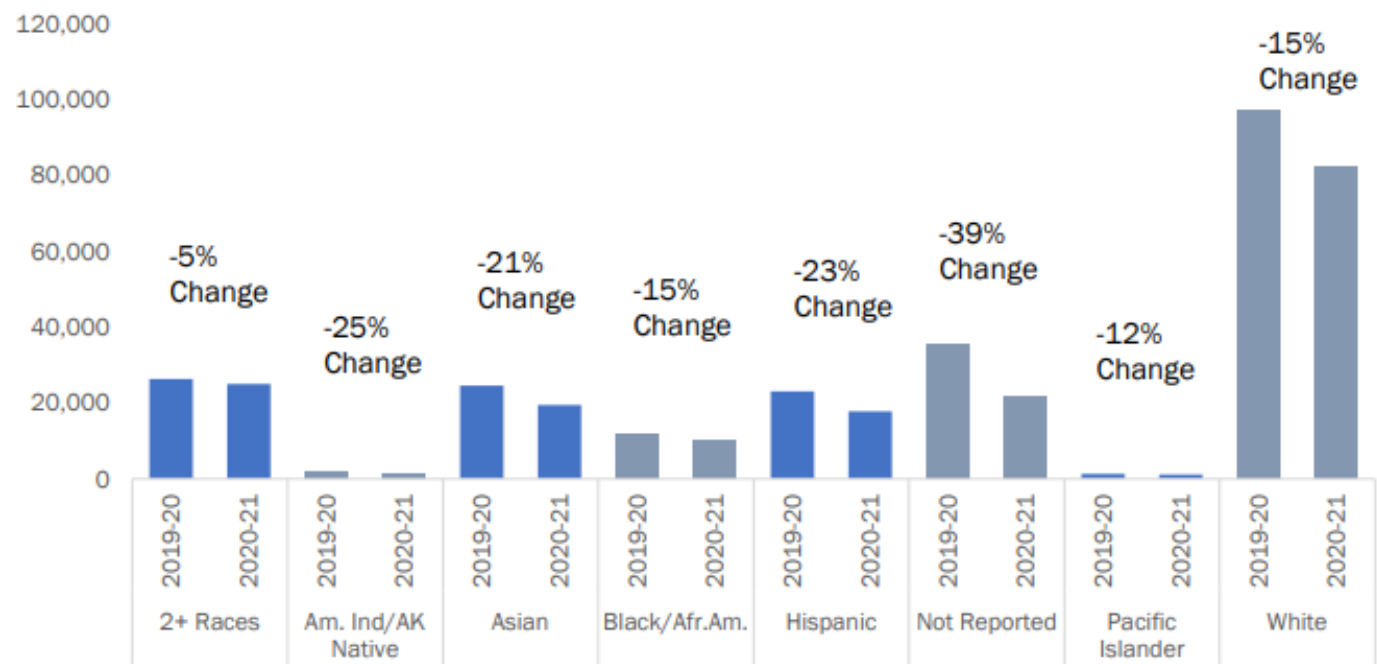


Fall-to-fall headcount by continuing and new



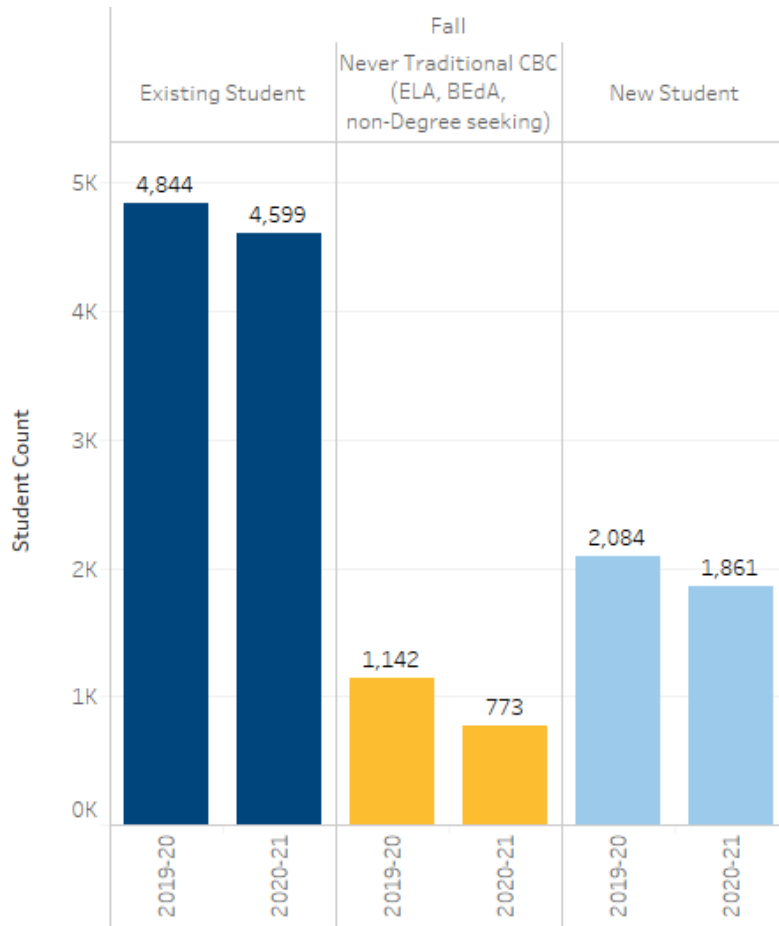
Total System Decline:
Headcount: -19%
FTE: -14%

Fall-to-fall headcount by race/ethnicity



CBC Enrollment – Fall 2020

Fall-to-fall headcount by continuing and new

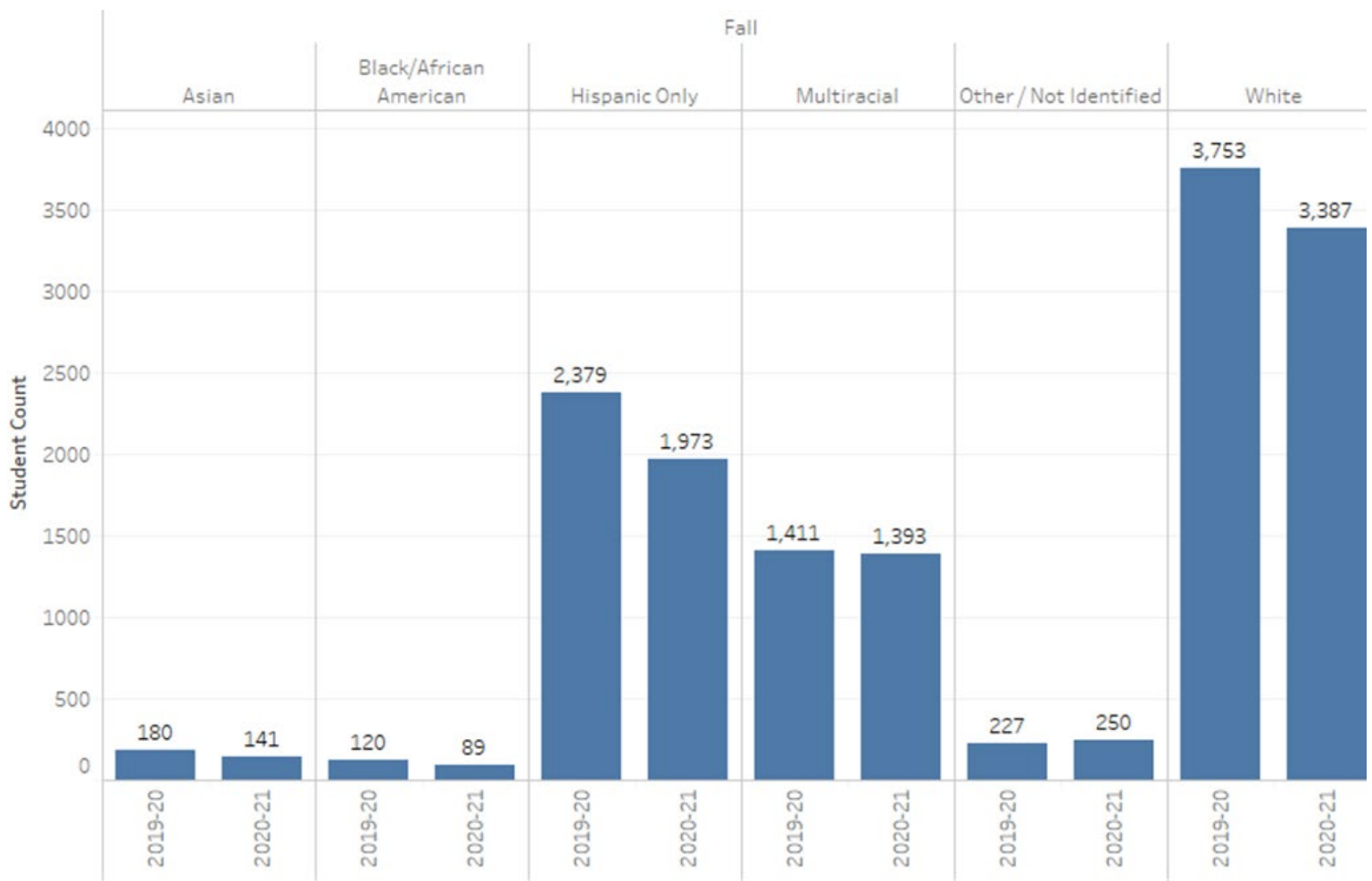


Continuing Students: -5.1%

New Students: -10.7%

Never Traditional CBC: -32.3%

CBC Headcount by Race/Ethnicity



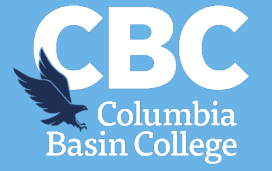
- Asian: -21.7%
- Black/African American: -25.8%
- Hispanic: -17.1%
- Multiracial: -1.3%
- Other: +10.1%
- White: -9.8%

Career Connect Tech - Pathways with K12

- One of two pilots in WA
- Career Connect WA
- Located at New Horizons
- Fall 2021
- Career Launch Endorsement
- Cyber Security and Information Technology
- WA State Commission on Hispanic Affairs
 - Brian Moreno



Washington Workforce Portal



- Partners:
 - Association for Washington Business (AWB)
 - Tri-Cities Regional Chamber of Commerce
 - Washington State University-Tri-Cities
 - Columbia Basin College
- Second pilot site
 - Spokane – first pilot site
- Students
- Employers



Washingtonworkforceportal.org

Login/Register  Sign in or create an account for full access.



INDUSTRIES

REGIONS

ABOUT US

PARTNERS

STUDENTS

EMPLOYERS

EDUCATORS

Internships ▾

Find the perfect fit for you and more.



Feedback

START BRIDGING THE SKILLS GAP TODAY!

GET STARTED NOW



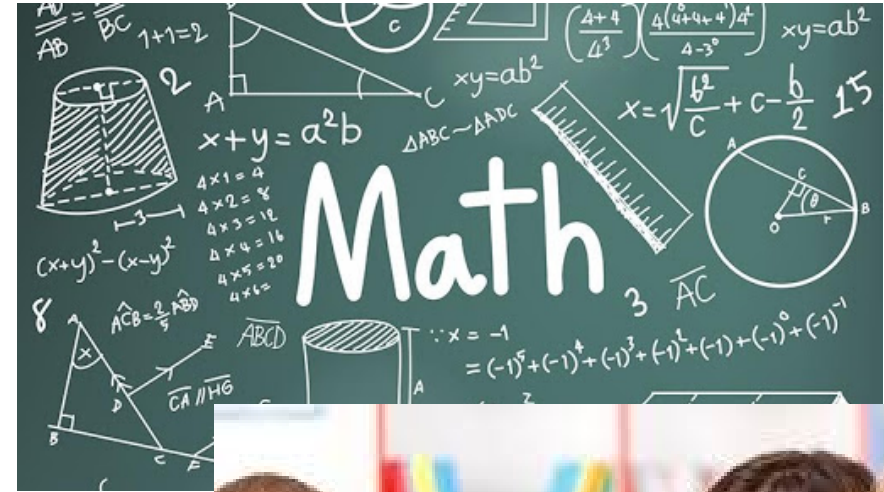
New Programs

- Health Physics – BAS
 - Pathway for AAS in Nuclear Technology
- AAS in Agriculture Production
 - Career Launch Endorsement
 - Short-term certificates:
 - Crop and Soil Science
 - Hydroponics and Greenhouse Management
 - Precision Agriculture
- BAS in Community Health (under review)



- **Math 100**

- College level requirement for:
- Welding Technology
- Machine Technology
- Automotive Technology
- Early Childhood Education



- **Early Childhood Education Certification**

- Initial Short-Term Certification



New Services

- Career Services Office
- Case Management Advising
- Expanded Counseling



Student Recreation Center



Student Recreation Center



Plans for fall

Strategic Planning Process

- Strategic Plan – through 2024
- Open feedback sessions and affinity group sessions available
- Visit www.columbiabasin.edu/strategicplan
- **We need to hear from you!!**



Thank You

