



# Economic Development

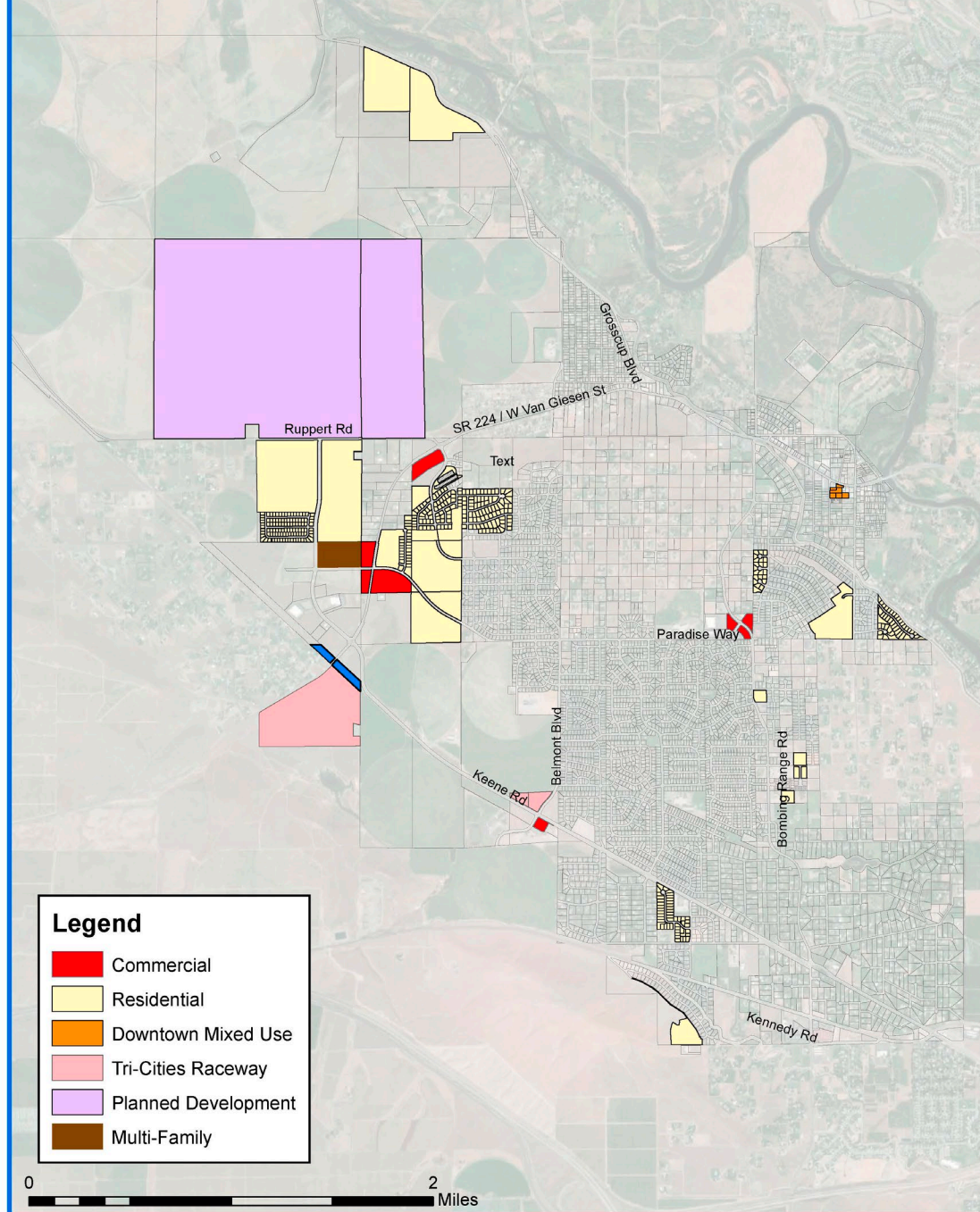
TRI-CITIES REGIONAL ECONOMIC OUTLOOK – 2021



# What's Happening in West Richland?







THIS MAP IS FOR REPRESENTATION PURPOSES ONLY. PLEASE CONTACT THE COMMUNITY DEVELOPMENT DEPARTMENT AT (509) 967-5902 WITH ANY QUESTIONS.  
Created: 2/19/2021 TEM





# New Residential Development



- ▶ We set a new record with 230 New SFR last year! On pace to beat those numbers this year. (120 in 2019)
- ▶ Approximately 160 new multifamily units to start this year



# Commercial Growth

- ▶ Circle K at Bombing Range and Paradise (by Yokes)
- ▶ Sunmarket & Firehouse Subs at Belmont and Keene (by City Hall)
- ▶ C-Store at West Van Giesen and Paradise (by Heights @ Red Mtn)
- ▶ RSD: Teaching, Learning and Administration Center
- ▶ RSD: Tapteal Elementary
- ▶ New Fire Station
- ▶ This year: New West Richland Police Station



*Come On In! We're Open to Business!*

