



**Pacific Northwest**  
NATIONAL LABORATORY

*Proudly Operated by **Battelle** Since 1965*

# Economics of PNNL

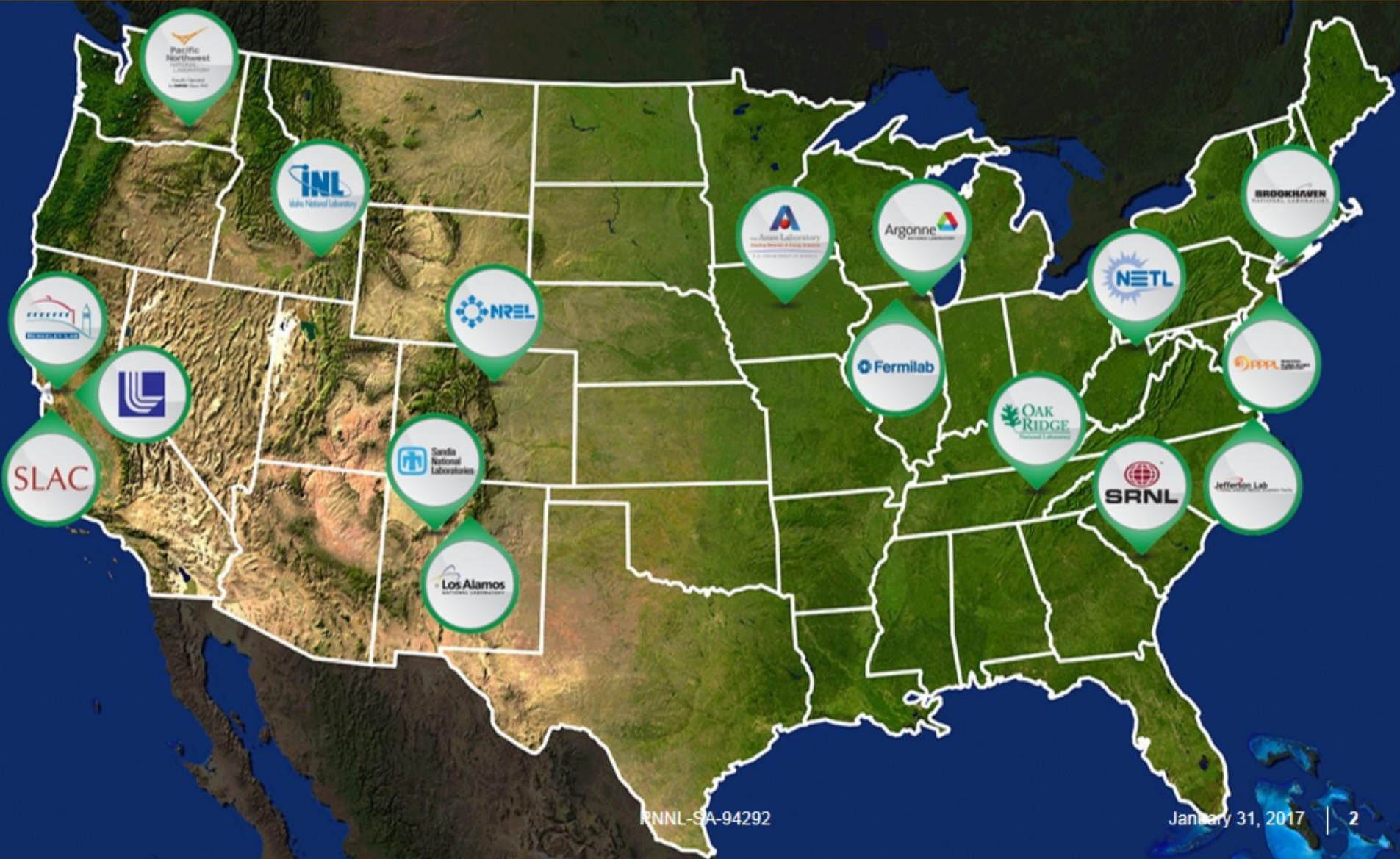
## TRIDEC'S 18<sup>TH</sup> ANNUAL ECONOMIC OUTLOOK

Tracie Cowen, Business Systems

Economics of Hanford and PNNL Panel



# The National Laboratory System







# PNNL is mission-driven

We  
**TRANSFORM**  
**THE WORLD**  
through  
courageous  
**DISCOVERY**  
and  
**INNOVATION.**

- ▶ Operated by Battelle since 1965
- ▶ Unique S&T capabilities
- ▶ Mission-driven collaborations with government, industry and academia



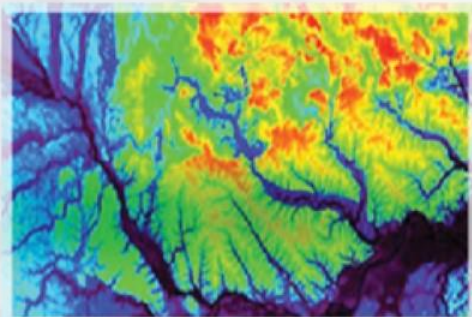
# Science mission: Advancing scientific frontiers and providing leadership

**\$228M in FY16**

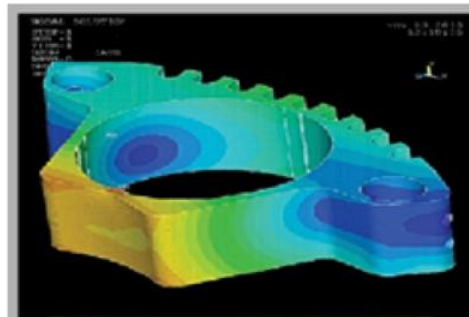


Pacific Northwest  
NATIONAL LABORATORY

Proudly Operated by **Battelle** Since 1965



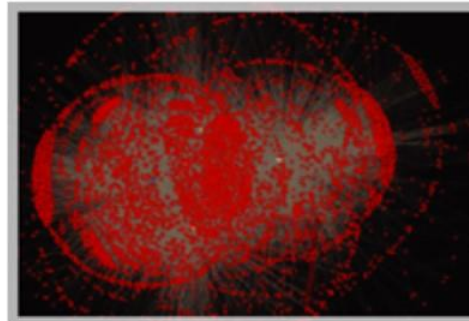
**Climate  
and Earth  
Systems  
Science**



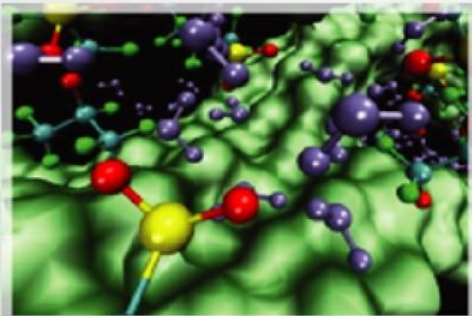
**Nuclear  
and Particle  
Physics**



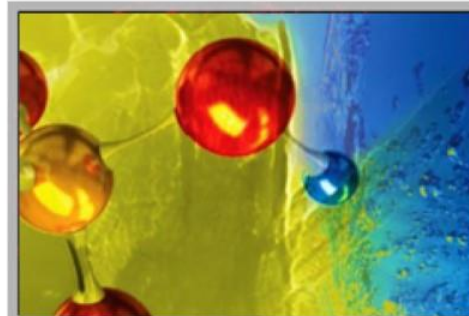
**Biological  
Systems  
Science**



**Advanced  
Computing**



**Chemical  
and Materials  
Sciences**



**DOE User  
Facilities  
(EMSL, ARM)**



# National Security mission: Preventing and countering terrorism and proliferation

**\$482M in FY16**



**Pacific Northwest  
NATIONAL LABORATORY**

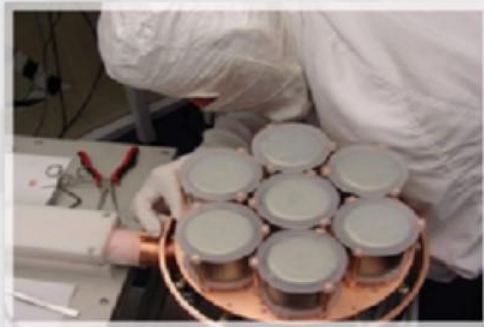
*Proudly Operated by **Battelle** Since 1965*



**Non-  
Proliferation**



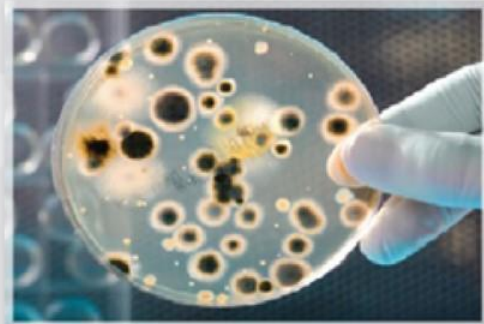
**Explosives  
Detection**



**Rad/Nuc  
Monitoring  
& Detection**



**Cyber  
Situational  
Awareness**



**Chem/Bio**



**Systems  
Engineering  
& Deployment**

# Energy and Environment mission: Innovations for a cleaner energy future

**\$228M in FY16**

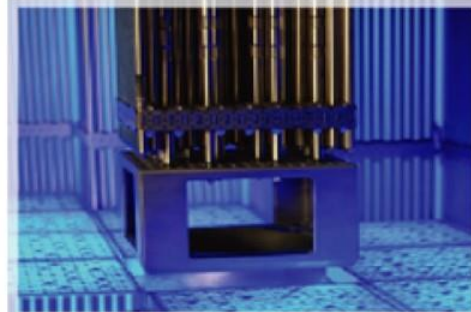


**Pacific Northwest  
NATIONAL LABORATORY**

*Proudly Operated by **Battelle** Since 1965*



**Electricity  
Infrastructure**



**Nuclear  
Energy**



**Energy  
Efficiency &  
Renewable  
Energy**



**Nuclear  
Regulatory**



**Clean Fossil  
Energy**



**Environmental  
Health &  
Remediation**



# PNNL: an Economic Engine for Washington State



Pacific Northwest  
NATIONAL LABORATORY

Proudly Operated by **Battelle** Since 1965

Known for addressing many of America's most pressing issues in science, energy, the environment, and national security, we also deliver significant economic impact in the form of funding and spending, spinoff companies, educational support, and charitable contributions. We believe in the power of science and technology institutions and embrace our role to help sustain vibrant, educated communities.





# PNNL's Annual Spending in FY15



# \$955M

Annual Spending



# PNNL's FY15 Domestic Purchased Goods and Services



# \$302M

Domestic purchased goods and services

**\$76M**

in Washington State



# PNNL's Total Payroll in FY15



**\$412M**

Total payroll

**\$384M**

in Washington State





# 4,377

Employees

**94% (4,107)** living in Washington State in 2015

**24%** growth in employment 2000-2015



# What Do You Think?

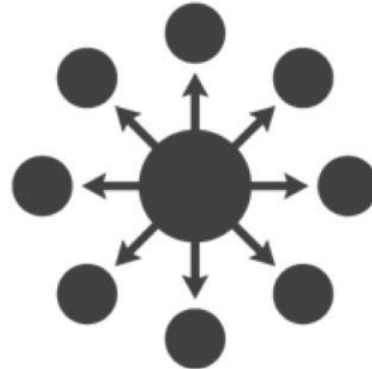
What is the estimated amount of tourism expenditures made by PNNL visitors every year?

- a. \$500K
- b. \$1M
- c. \$3M
- d. \$6M





# Companies with PNNL Roots



# 99

Companies with PNNL roots

**71** in Washington State

**\$567M** estimated revenue in Washington State

**3,701** total employees

**2,293** employees in Washington State

# PNNL's FY15 Total Economic Output

*supported by payroll and purchased goods and services*



# \$1.38B

Total economic output supported by PNNL payroll  
and domestic purchased goods and services

**\$519M** in Washington State wage income

**6,695** total jobs generated in Washington State





**Pacific Northwest**  
NATIONAL LABORATORY

*Proudly Operated by Battelle Since 1965*

# Questions?

**Tracie Cowen**

Division Director, Business Development & Analysis

(509) 372-6305

[tracie.cowen@pnnl.gov](mailto:tracie.cowen@pnnl.gov)